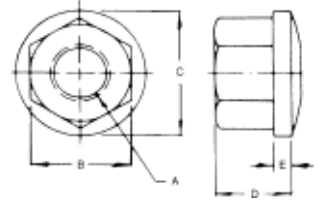


## Spherical Collar Nuts

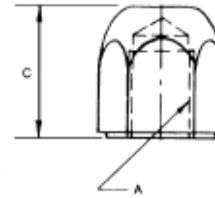
- ▶ Available in case hardened carbon steel or stainless steel
- ▶ Spherical collar nuts can be used with the bottom half of Morton's spherical washers for self-alignment.



Low Carbon Steel PART #	Stainless Steel PART #	Thread A	B	C	D	E
SCN-0	SCN-0SS	1/4-20	1/2	5/8	5/16	3/32
SCN-00	SCN-00SS	5/16-18	9/16	3/4	3/8	3/32
SCN-1	SCN-1SS	3/8-16	11/16	7/8	1/2	1/8
SCN-9	-	7/16-14	3/4	1"	9/16	5/32
SCN-2	SCN-2SS	1/2-13	7/8	1-1/8	11/16	5/32
SCN-3	SCN-3SS	5/8-11	1-1/16	1-3/8	13/16	3/16
SCN-4	SCN-4SS	3/4-10	1-1/4	1-5/8	1	1/4
SCN-5	SCN-5SS	7/8-9	1-7/16	1-7/8	1-1/8	1/4
SCN-6	SCN-6SS	1"-8	1-5/8	2	1-1/4	1/4
SCN-7	SCN-7SS	1-1/8-7	1-13/16	2-1/4	1-1/4	1/4
SCN-8	-	1-1/4-7	2	2-5/8	1-1/4	1/4

- ▶ Available in case hardened steel or stainless steel
- ▶ Excellent for protecting exposed threads

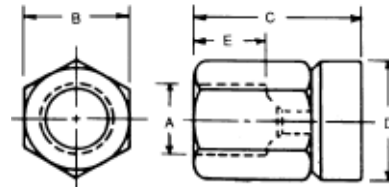
## Acorn Nuts



Low Carbon Steel PART #	Stainless Steel PART #	Thread A	Hex	C	Thread Depth
AN-6	AN-6SS	1/4-20	5/8	5/8	1/2
AN-0	AN-0SS	5/16-18	5/8	5/8	1/2
AN-1	AN-1SS	3/8-16	3/4	3/4	19/32
AN-2	AN-2SS	1/2-13	7/8	15/16	3/4
AN-3	AN-3SS	5/8-11	1-1/16	1-3/16	15/16
AN-4	AN-4SS	3/4-10	1-1/4	1-3/8	1-3/32
AN-5	AN-5SS	7/8-9	1-7/16	1-5/8	1-9/32

- ▶ Case hardened carbon steel
- ▶ Black oxide finish
- ▶ Two piece construction
- ▶ Hex portion of nut rotates 360°

## Swivel Nuts



PART #	A Thread	B	C	D	E
SN-1	#10-24	1/4	5/16	5/16	13/64
SN-2	1/4-20	5/16	13/32	3/8	3/16
SN-3	5/16-18	3/8	15/32	7/16	1/4
SN-4	3/8-16	7/16	17/32	1/2	17/64
SN-5	7/16-14	1/2	19/32	9/16	5/16
SN-6	1/2-13	5/8	21/32	11/16	3/8
SN-7	5/8-11	3/4	27/32	7/8	7/16
SN-8	3/4-10	7/8	1	1	1/2